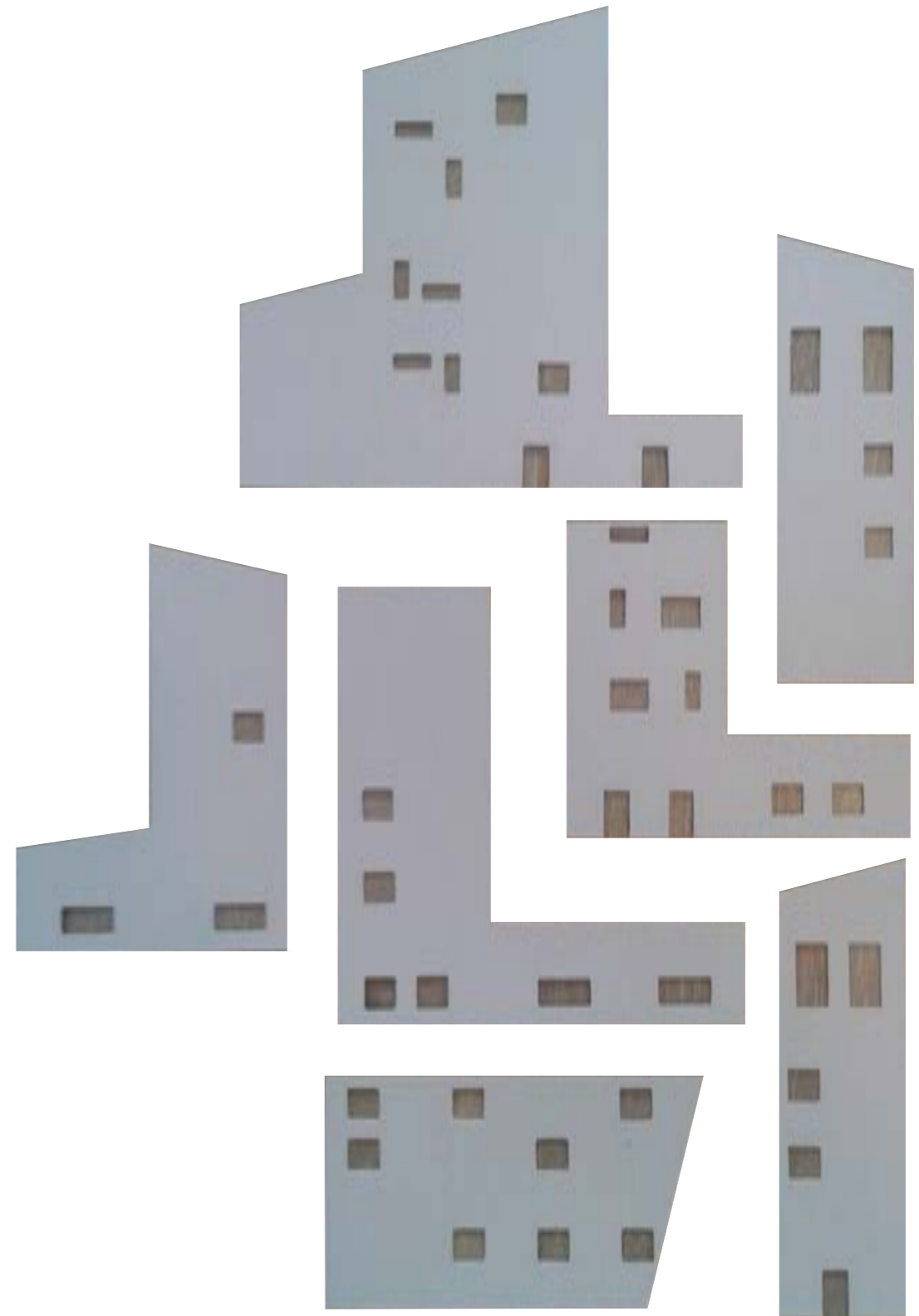


UNIVERZITET CRNE GORE
Arhitektonski fakultet

Završni specijalistički rad
Duhovni centar u Bijelom Polju

mentor:
Prof. dr Dušan Vuksanović

student:
Jelica Babić 20/15



_analiza terena

_područje opštine sastoji se od stijena paleozojske i kvartalne starosti. Obod njene kotline sastoji se od stijena paleozojske starosti. Od stijenskih masa najčešći su škriljci sive i crne boje. Dno kotline sastavljeno je od stijena kvartalne starosti.

_srednja terasa Lima je najrasprostranjenija, i na njoj je najvećim dijelom pozicionirana Opština. Sastoji se od pijeska, malo prašinstog i zaglinjenog, i šljunka slabo sortiranog razne granulacije.

_prema stabilnosti, tereni su svrstani u stabilne, uslovno stabilne i nestabilne.

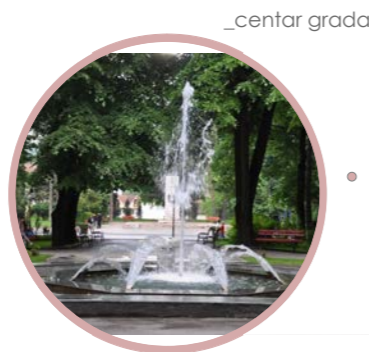
_u pregledu seizmičnosti, područje Opštine se svrstava u 7-8 stepeni seizmičnosti, pri čemu koeficijent ubrzanja, za period od 100 godina, iznosi 0,063 cm/s². Nestabilne padine, strmi odsjeci, tereni sa visokim nivoom podzemnih voda su seizmički više ugroženi.

_klima

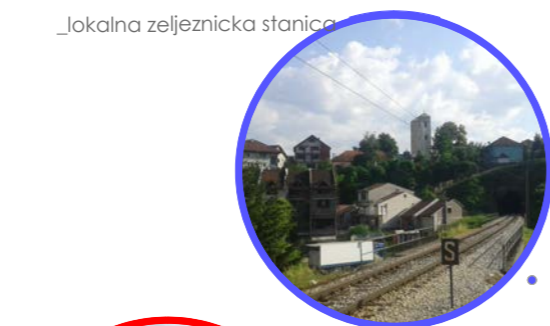
_opština ima umjereno kontinentalnu klimu sa jasno izraženim godišnjim dobima, pri čemu je jesen toplija od proljeća, što pogoduje sazrijevanju biljnih kultura.

_bjelopoljska kotlina je okružena planinskim masivima koji utiču na klimu, pojavu temperaturnih razlika, tišine, atmosferske padavine i magle u jesenjim, zimskim i prolječnim mjesecima. Prosječna temperatura u proljeće je 8,7°C, u toku ljetnji mjeseci 16,9°C, na jesen 9,4°C i u zimskom periodu 0,1°C.

_u vrijeme duvanja zapadnih i sjeverozapadnih vjetrova ima dosta padavina, sa godišnjim prosjekom 940 litara po m², bez većih kolebanja u pojedinim godinama. Padavine su ravnomjerno rasporedjene u toku godine, tako da nema izrazito sušnih ili izrazito vlažnih perioda. Najviše padavina ima u novembru, a najmanje u maju. Sa povećanjem nadmorske visine raste i količina padavina, tako da ogranci Bjelasice dobijaju oko 1.500 mm padavina godišnje. Godišnji prosjek je 109 kišnih, 21 sniježnih, 23 vedrih i 135 oblačnih dana.



_centar grada



_lokalna zeljeznicka stanica



_crkva Svetog Petra i Pavla



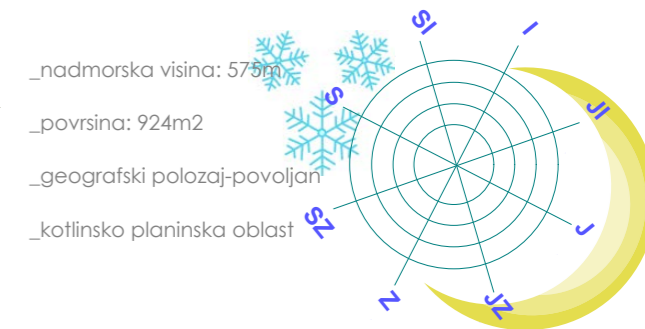
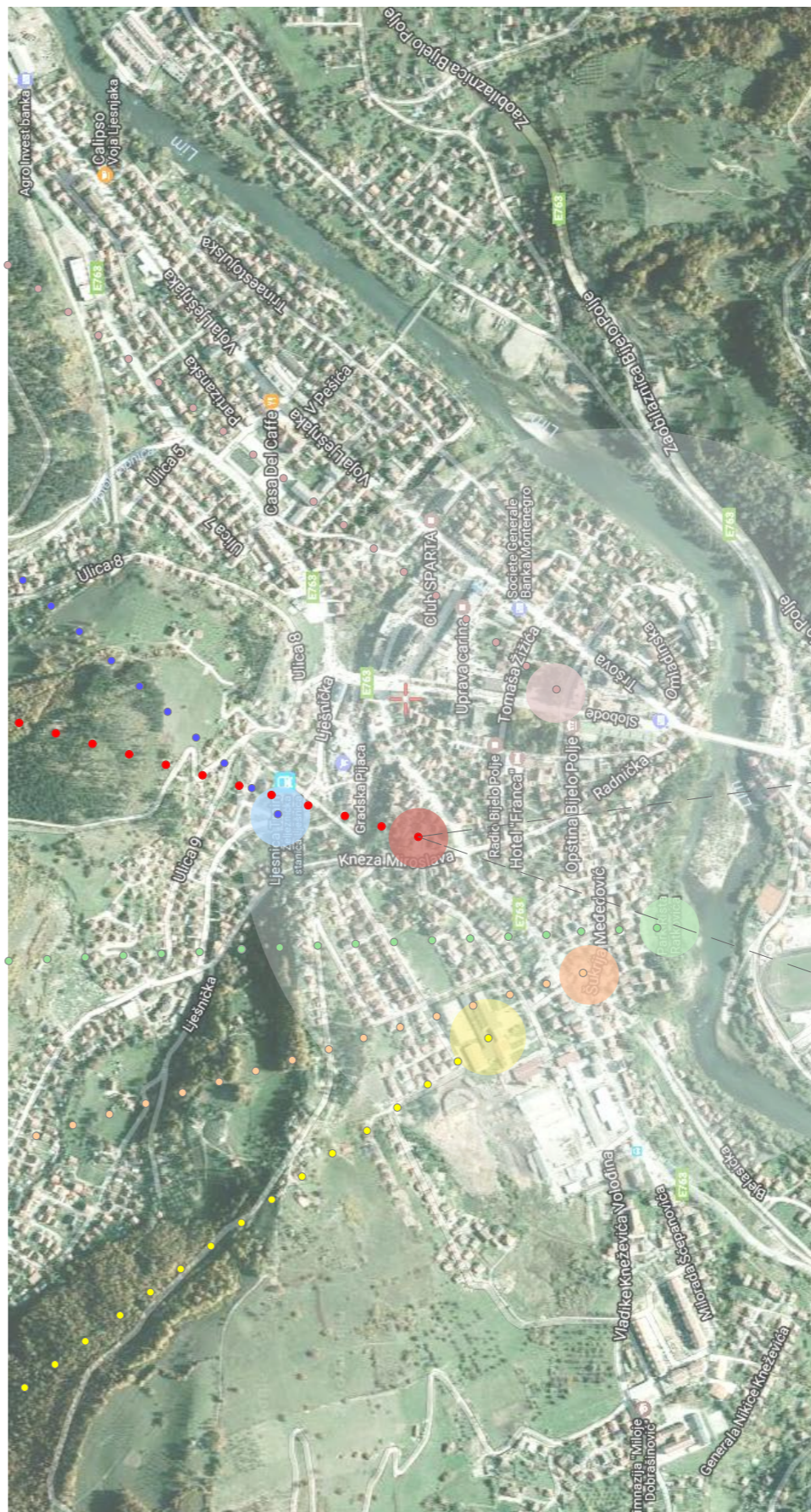
_park Rista Ratkovića



_gradska dzamija



_osnovna skola "Marko Miljanov"



_nadmorska visina: 575m

_povrsina: 924m2

_geografski položaj-povoljan

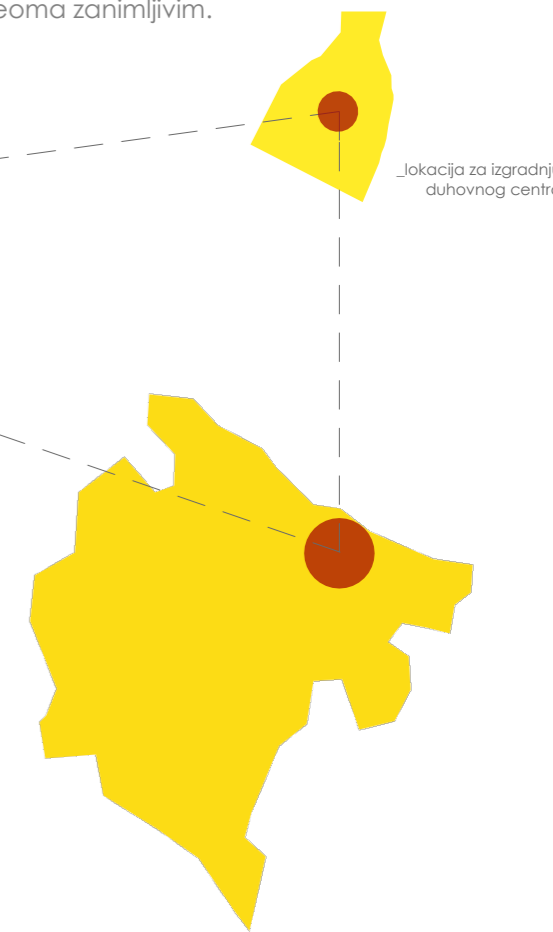
_kottinsko planinska oblast

_reljef

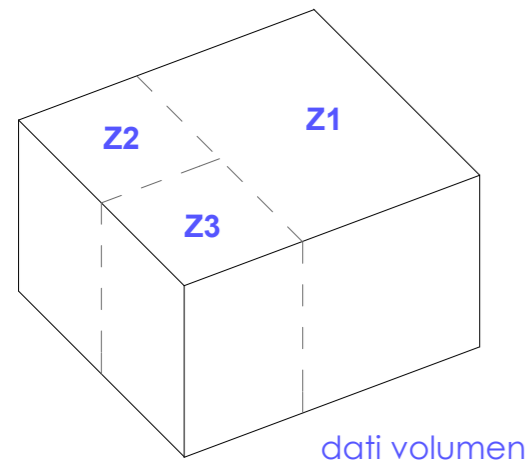
_područje Opštine pripada brdsko-planinskom području sjeverne Crne Gore.

_oko 95% njene teritorije nalazi se iznad 650 m nadmorske visine. Središnjim dijelom, uz rijeku Lim, prostire se dolina dužine 12 km i širine 3 km, čija je najniža nadmorska visina 531m.

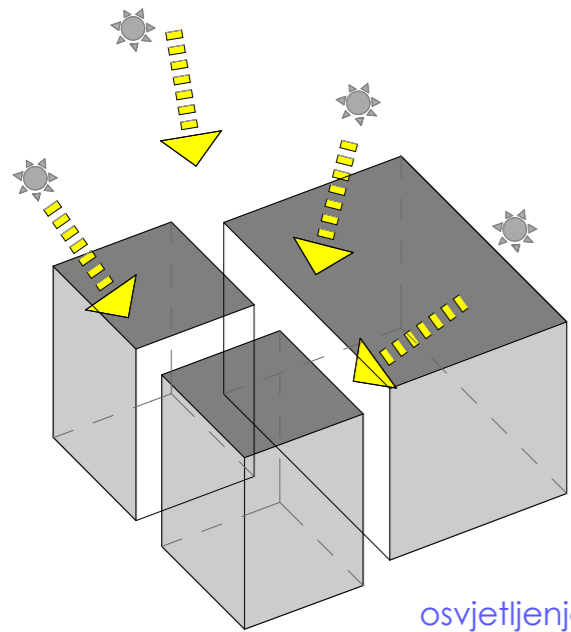
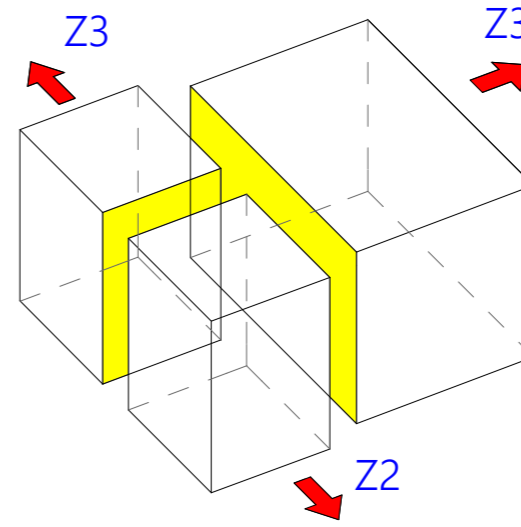
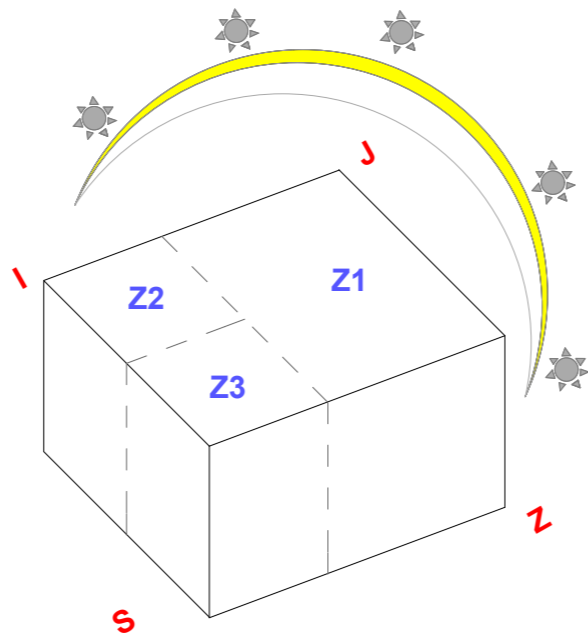
_gradsko jezgro Opštine nalazi se na dvije terase, nadmorske visine 575 i 620 m. Okolne planine, Bjelasica sa najvišim vrhom Crna Glava (2.137 m), Lisa (1.509 m) i Stožer (1.576 m), čine reljef Opštine veoma zanimljivim.



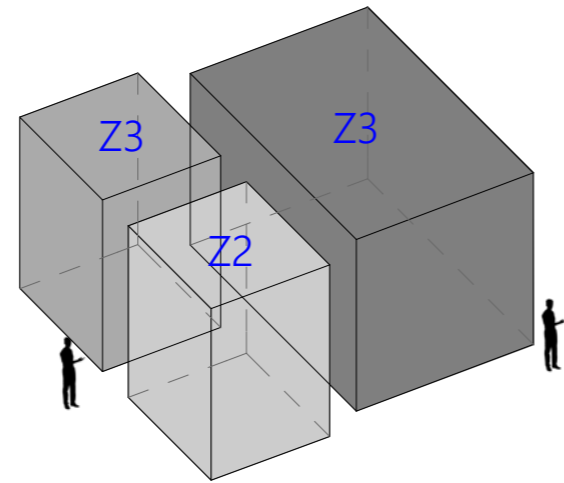
_lokacija za izgradnju duhovnog centra



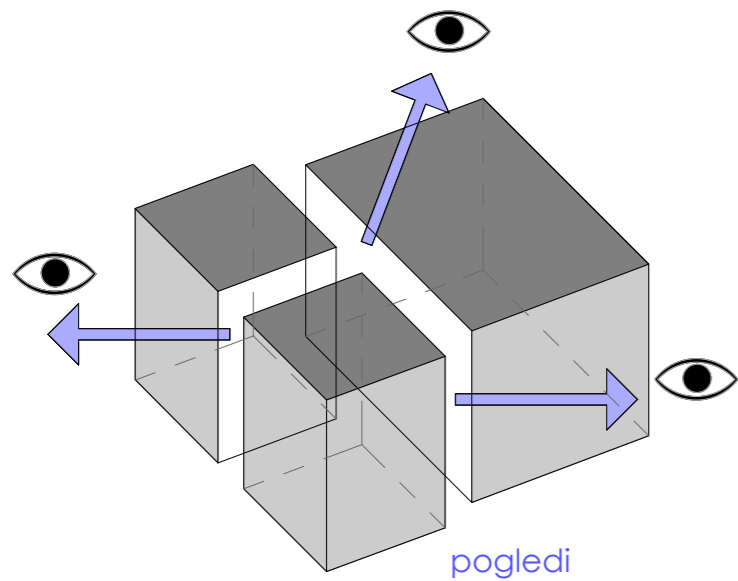
dati volumen



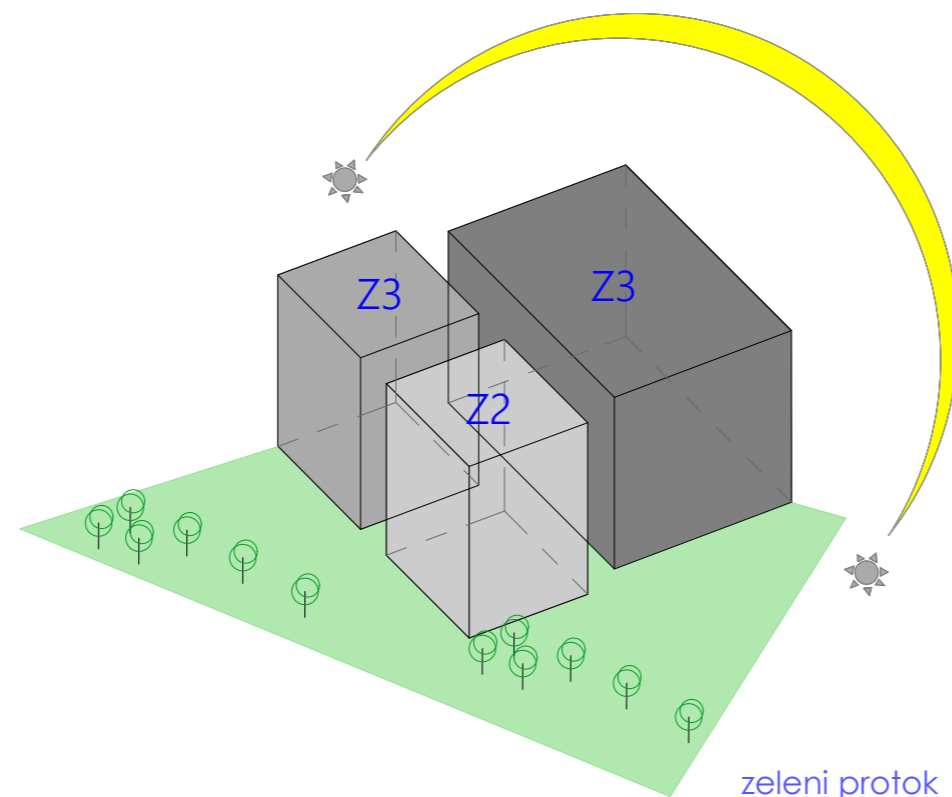
osvjetljenje



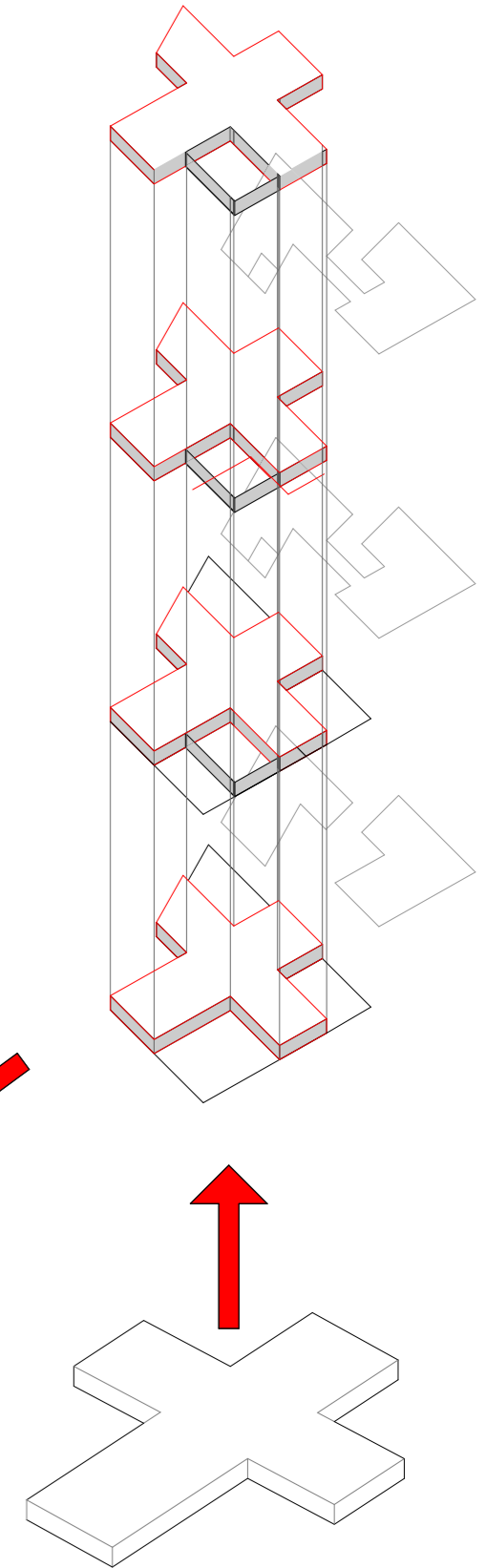
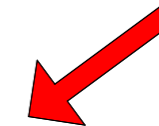
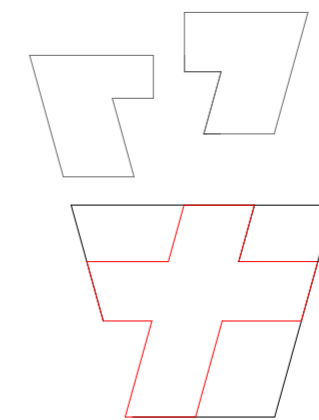
zone

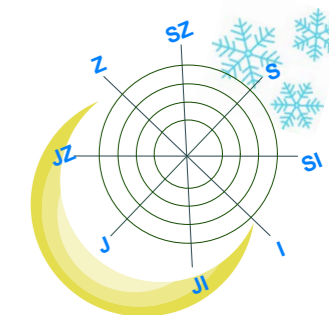


pogledi



zeleni protok



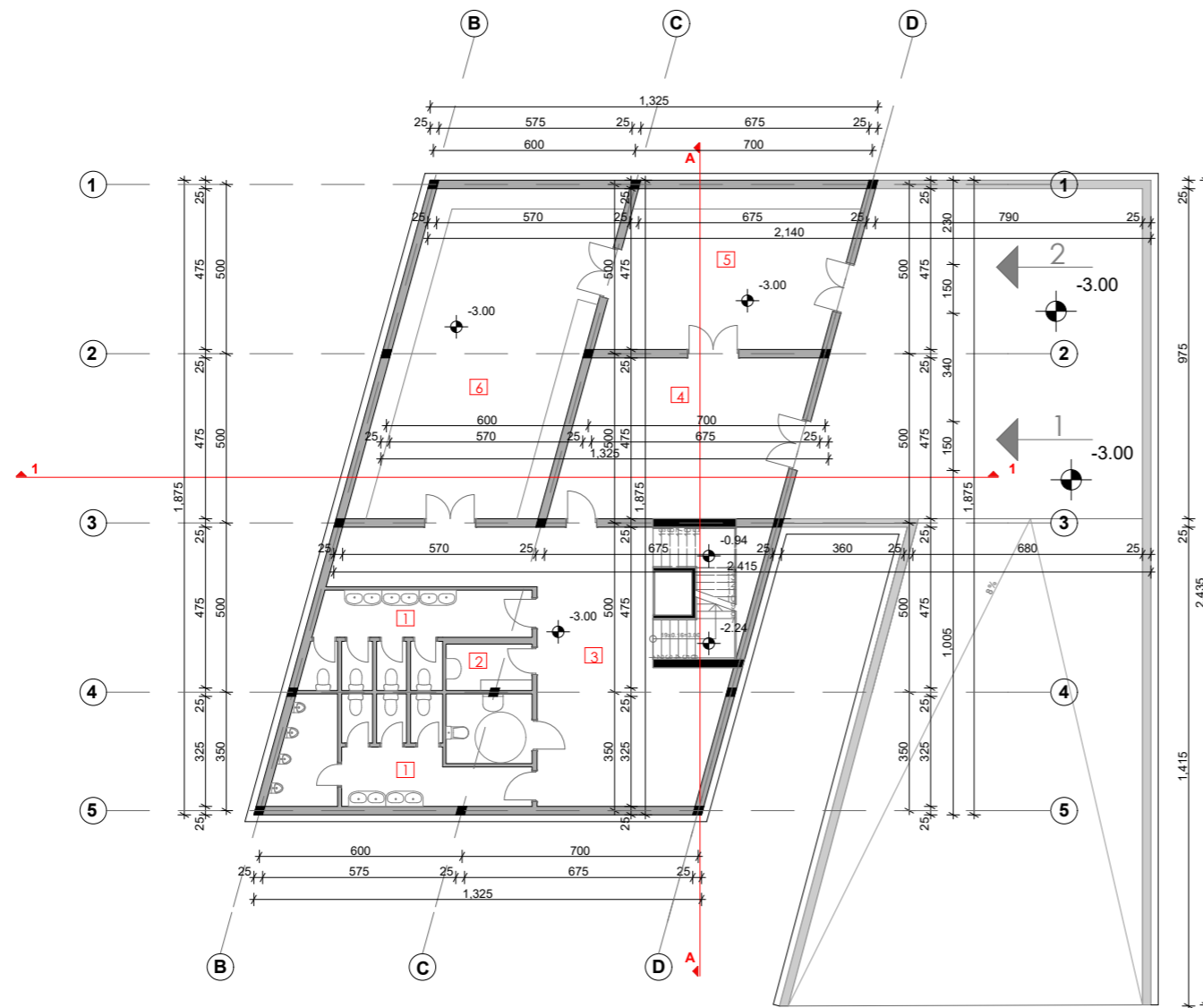
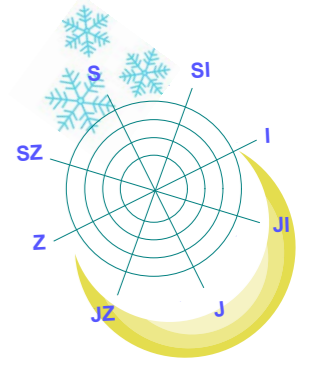


LEGENDA	
1.	Objekat 1- Duhovni centar
2.	Objekat 2- Konak I
3.	Objekat 3- Konak II

ULAZI	
1.	Ulaz u duhovni centar
2.	Ulaz u konak
3.	Ekonomski ulaz

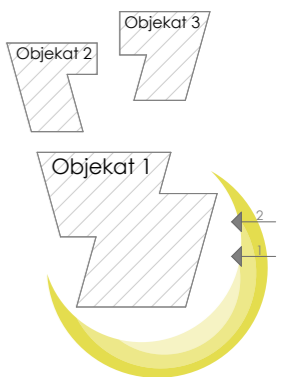
LEGENDA	
Vjerski objekat- Crkva	
1.	Svetog Petra i Pavla
2.	Stambeno stanovanje
3.	Stambeno poslovanje sa poslovnim prostorom
4.	Pruga Beograd-Bar
5.	Ulica Kneza Miroslava
6.	Ulica M. Kucevica
7.	Ulica III Sandzacke Brigade

Osnova sutereana
 R 1:200
 Objekat 1

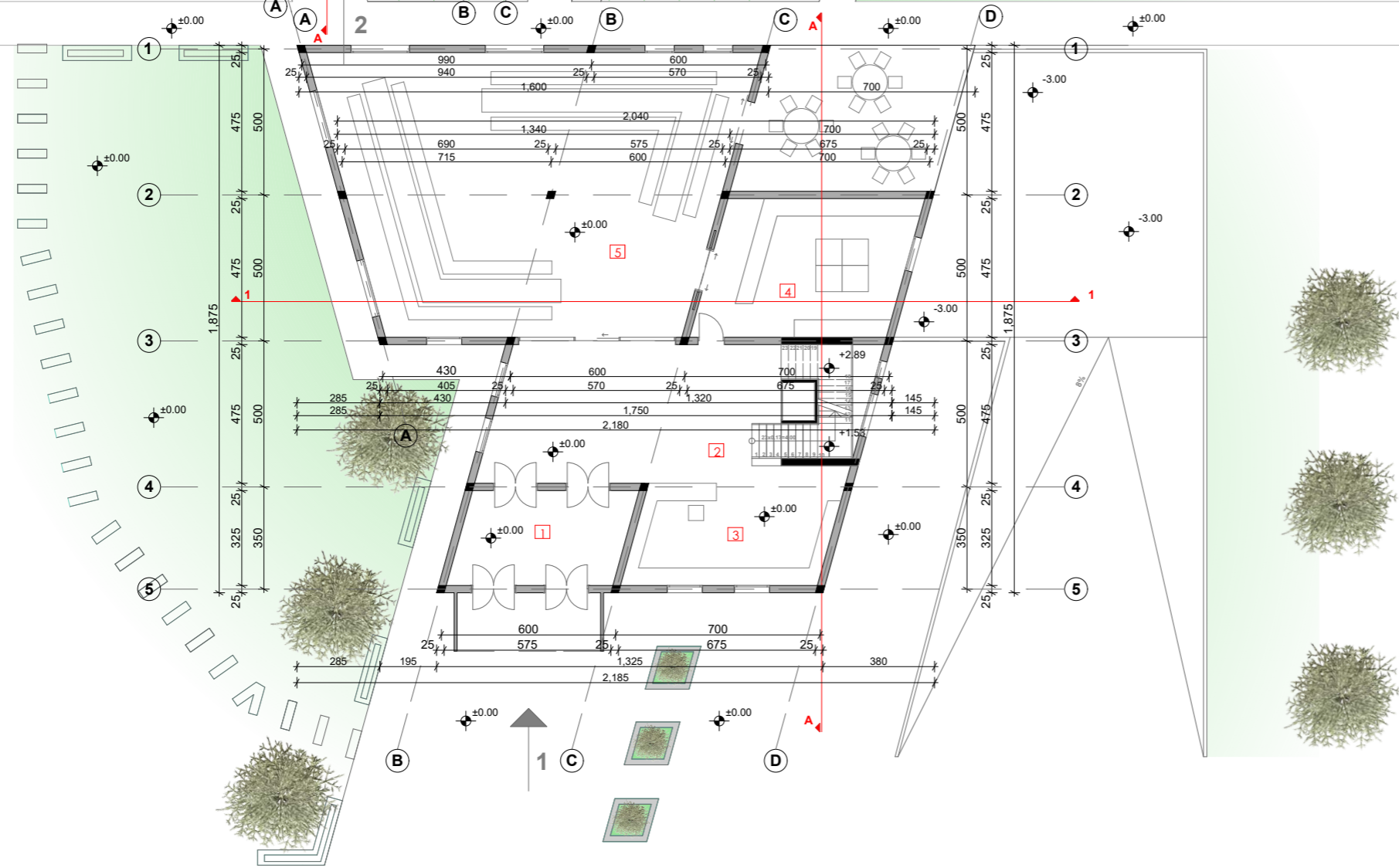
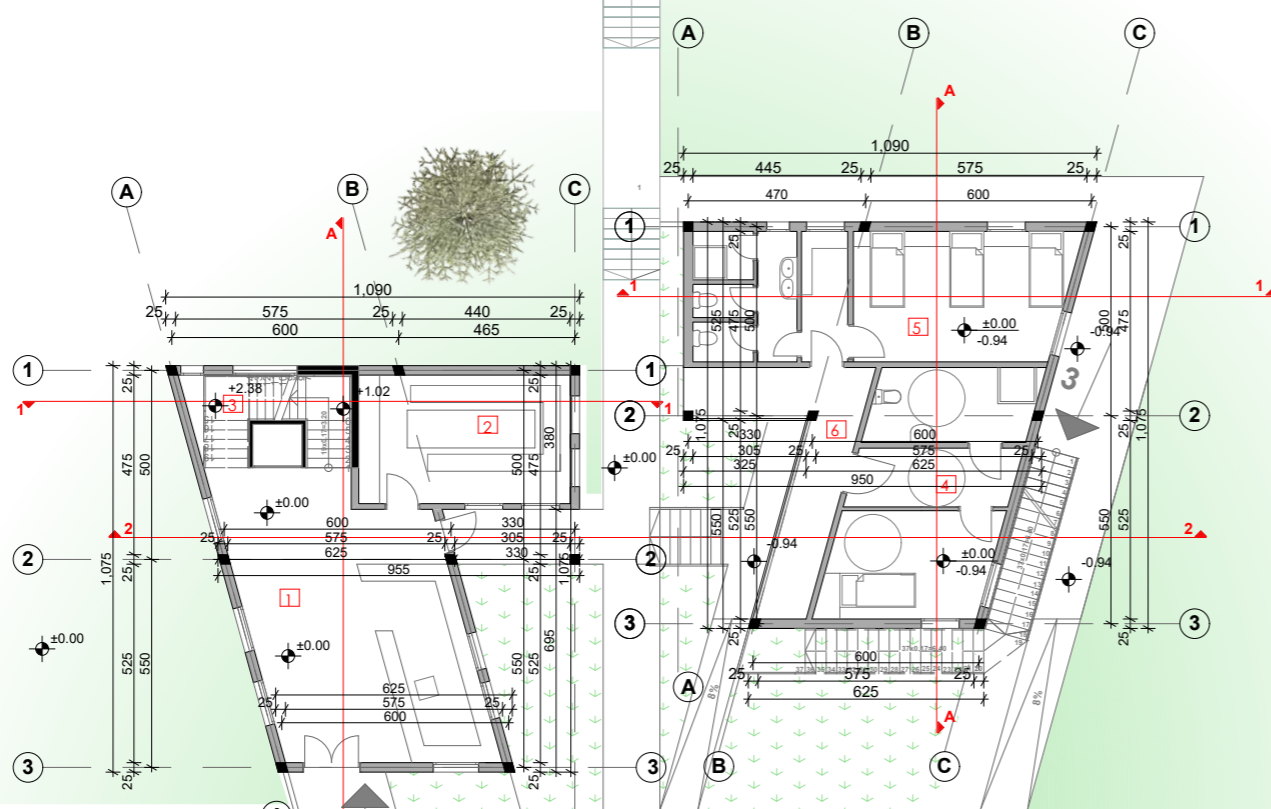
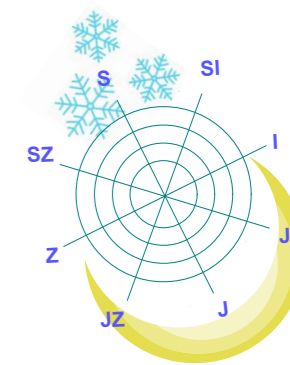


Legenda površina		
Objekat 1- Duhovni centar		
1	Sanitarije	44.75 m ²
2	Ostava za cistacice	3.50 m ²
3	Hol sa komunikacijama	58.80 m ²
4	Kotlarnica	32.20 m ²
5	Prostor za uglalj, pelet...	32.00 m ²
6	Magacin	55.65 m ²
ukupna površina sutereana		227.10 m ²

Legenda površina	
ULAZI	
1	Ulaz u kotlarnicu
2	Ulaz u magacin
	Ulaz
	Potporni zid



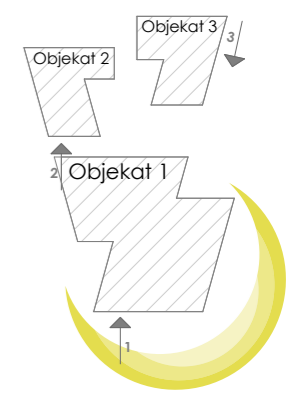
Osnova prizemlja
R 1:200



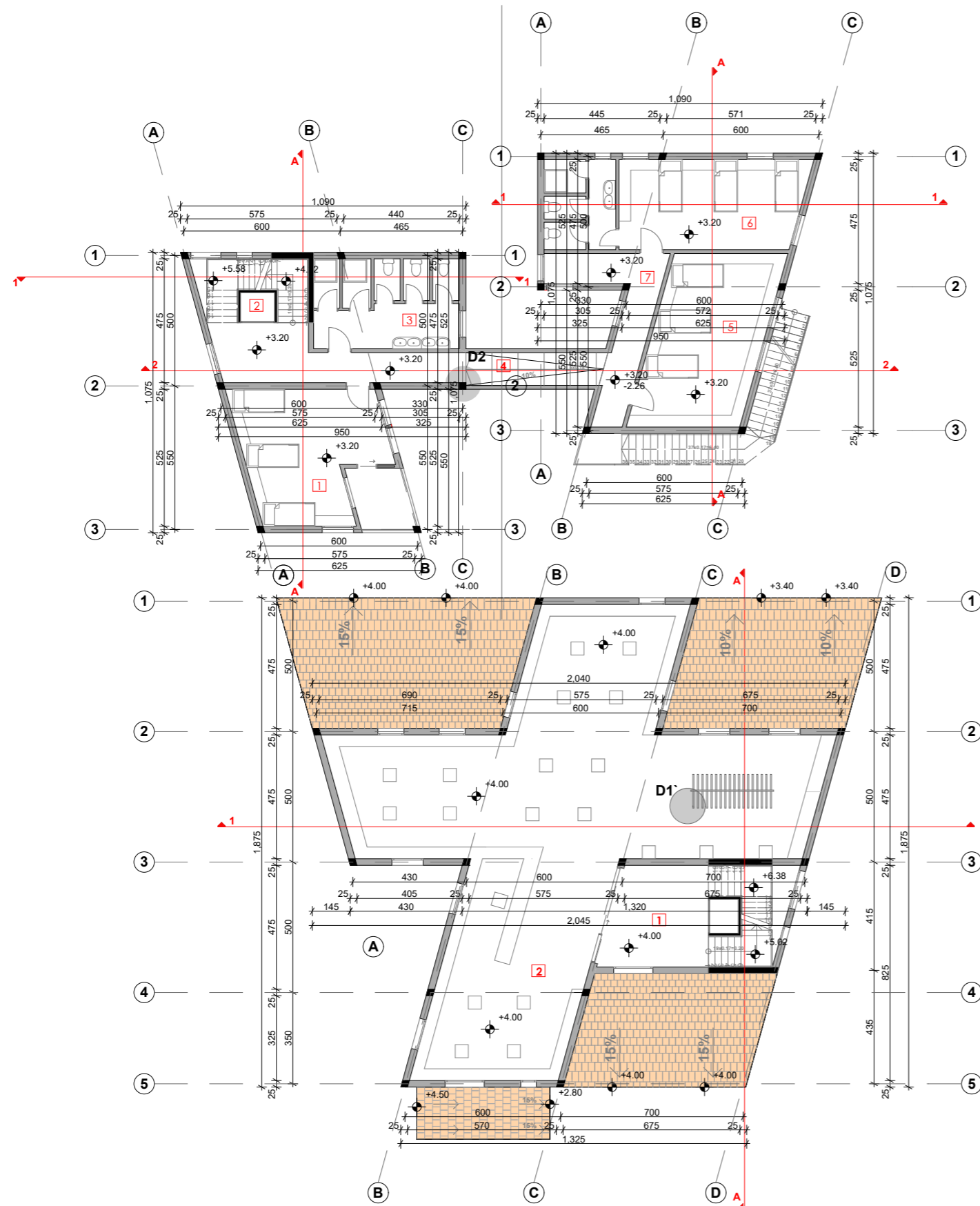
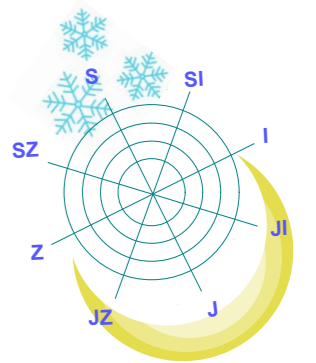
Legenda površina	
Objekat 2- Konak I	
1	Ulaz u konak/recepcija 42.70m ²
2	Cajna kuhinja/okupljanje 19.00m ²
3	Komunikacije 10.36m ²
ukupna površina prizemlja 72.06m ²	
Objekat 3- Konak II	
4	Soba za lica sa posebnim potrebama + sanitarije 28.00m ²
5	Soba/ 3 kreveta + sanitarije 34.00m ²
6	Natkrivena terasa 13.50m ²
ukupna površina prizemlja 75.50m ²	

Legenda površina	
Objekat 1- Duhovni centar	
1	Ulaz 18.95m ²
2	Hol sa komunikacijama 61.00m ²
3	Info pult/ Prodavnica 23.60m ²
4	Kuhinja 32.00m ²
5	Sala za narodna sabranja 125.30m ²
ukupna površina prizemlja 260.85m ²	

Legenda površina	
ULAZI	
1	Ulaz- Objekat 1- Duhovni centar
2	Ulaz- Objekat 2,3- Konak I
3	Ulaz- Objekat 3- Konak II- Apartman za vladiku



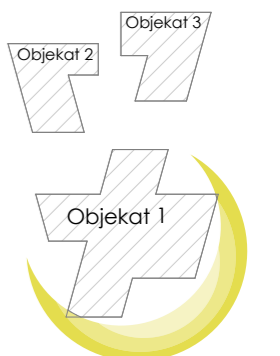
Osnova prvog sprata
R 1:200

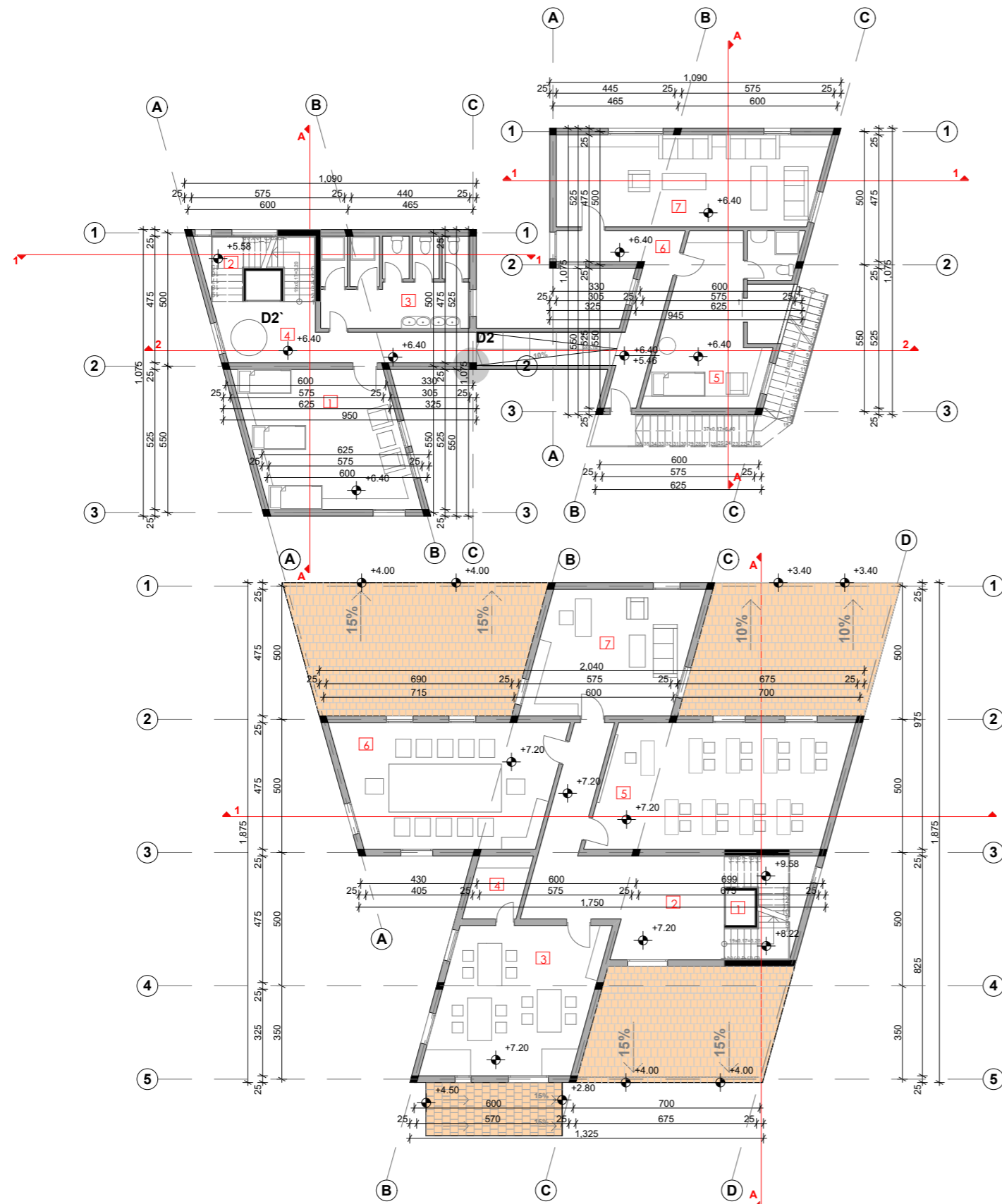
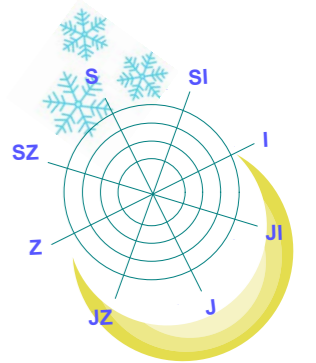


Legenda površina	
Objekat 2- Konak I	
1	Soba-6 kreveta 25.00m ²
2	Komunikacije 10.36m ²
3	Sanitarije 19.00m ²
4	Hodnik 22.00m ²
ukupna površina prvog sprata 76.36m ²	

Legenda površina	
Objekat 3- Konak II	
5	Soba-6 kreveta 28.95m ²
6	Soba/ 3 kreveta 34.00m ²
7	Hodnik 12.00m ²
ukupna površina prvog sprata 74.95m ²	

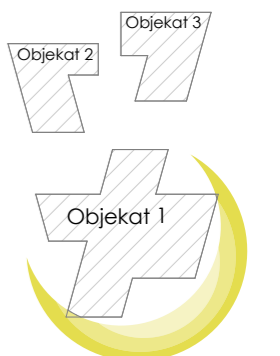
Legenda površina	
Objekat 1- Duhovni centar	
1	Hol sa komunikacijama 26.80m ²
2	Riznica i info pult 65.85m ²
ukupna površina prvog sprata 192.65m ²	

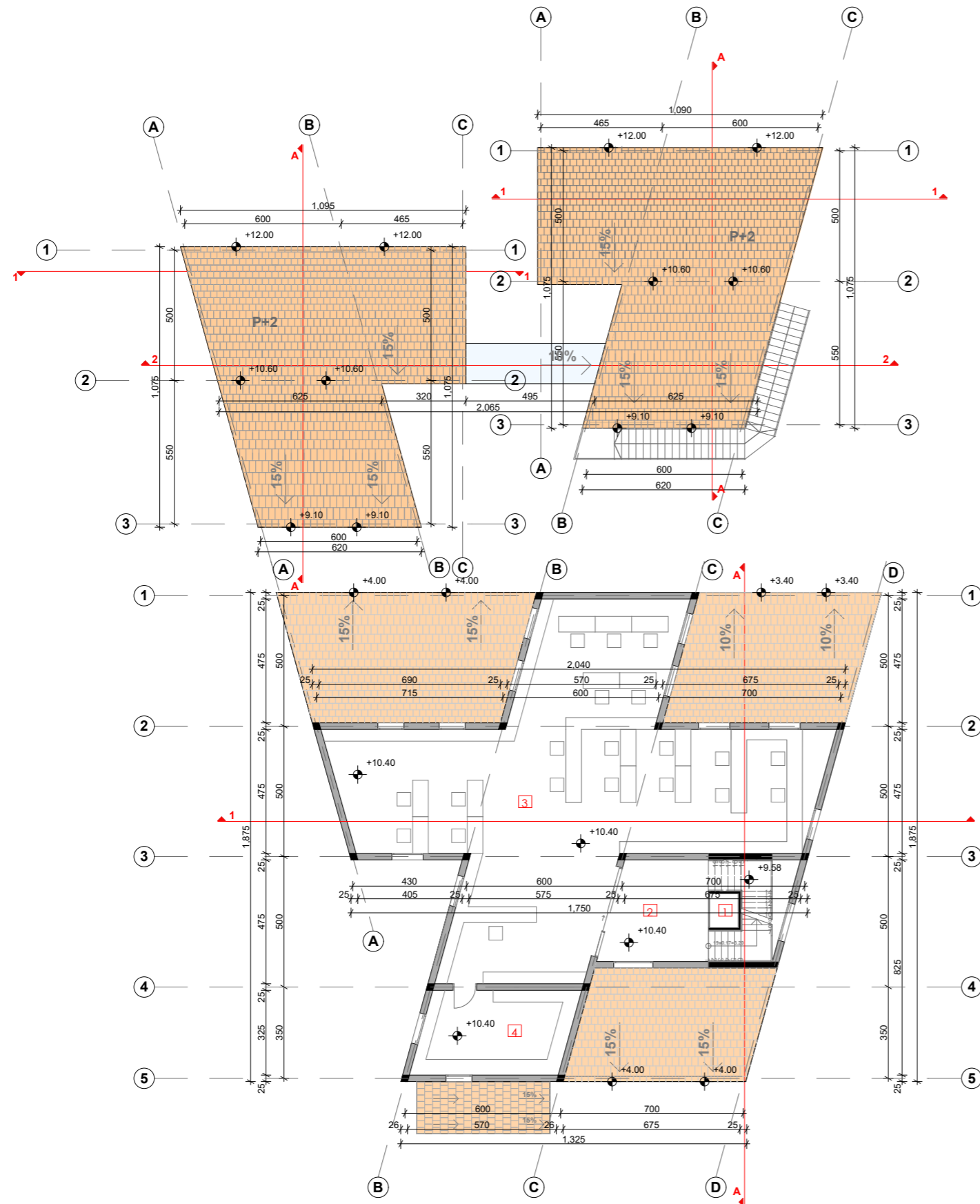
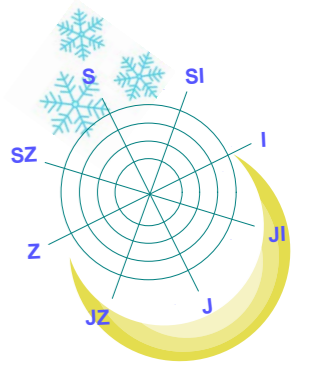




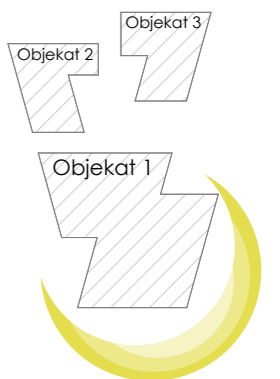
Legenda površina		
Objekat 2- Konak I		
1	Soba-6 kreveta	30.15m ²
2	Komunikacije	10.36m ²
3	Sanitarije	19.00m ²
4	Hodnik	22.00m ²
ukupna površina drugog sprata		
Objekat 3-Konak II		
5	Apartman za vladiku	21.40m ²
6	Hodnik	12.15m ²
7	Sala za sastanke	34.00m ²
ukupna površina drugog sprata		

Legenda površina		
Objekat 1		
1	Komunikacije	10.36m ²
2	Hol/hodnik	31.30m ²
3	Radionica	32.20m ²
4	Ostava	4.80m ²
5	Ucionica za vjeronauku i crkveni hor	42.20m ²
6	Sala za sastanke	36.85m ²
7	Kancelarija za predsjednika crvenog odbora	27.12m ²
ukupna površina drugog sprata		

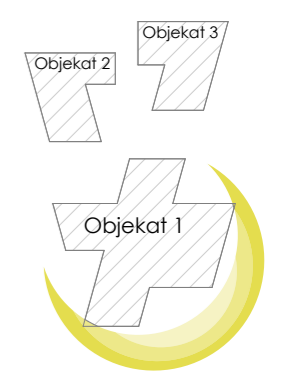
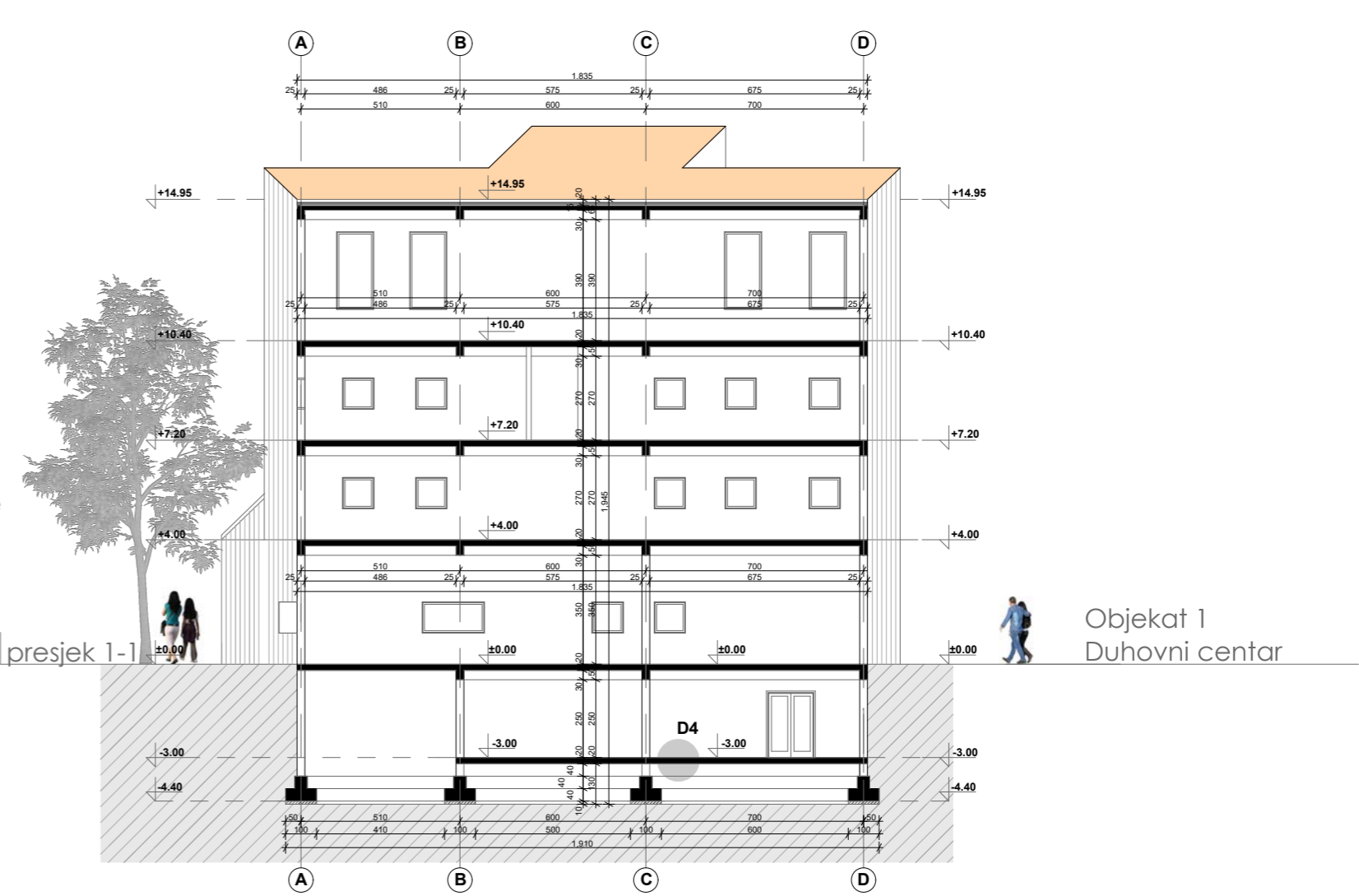
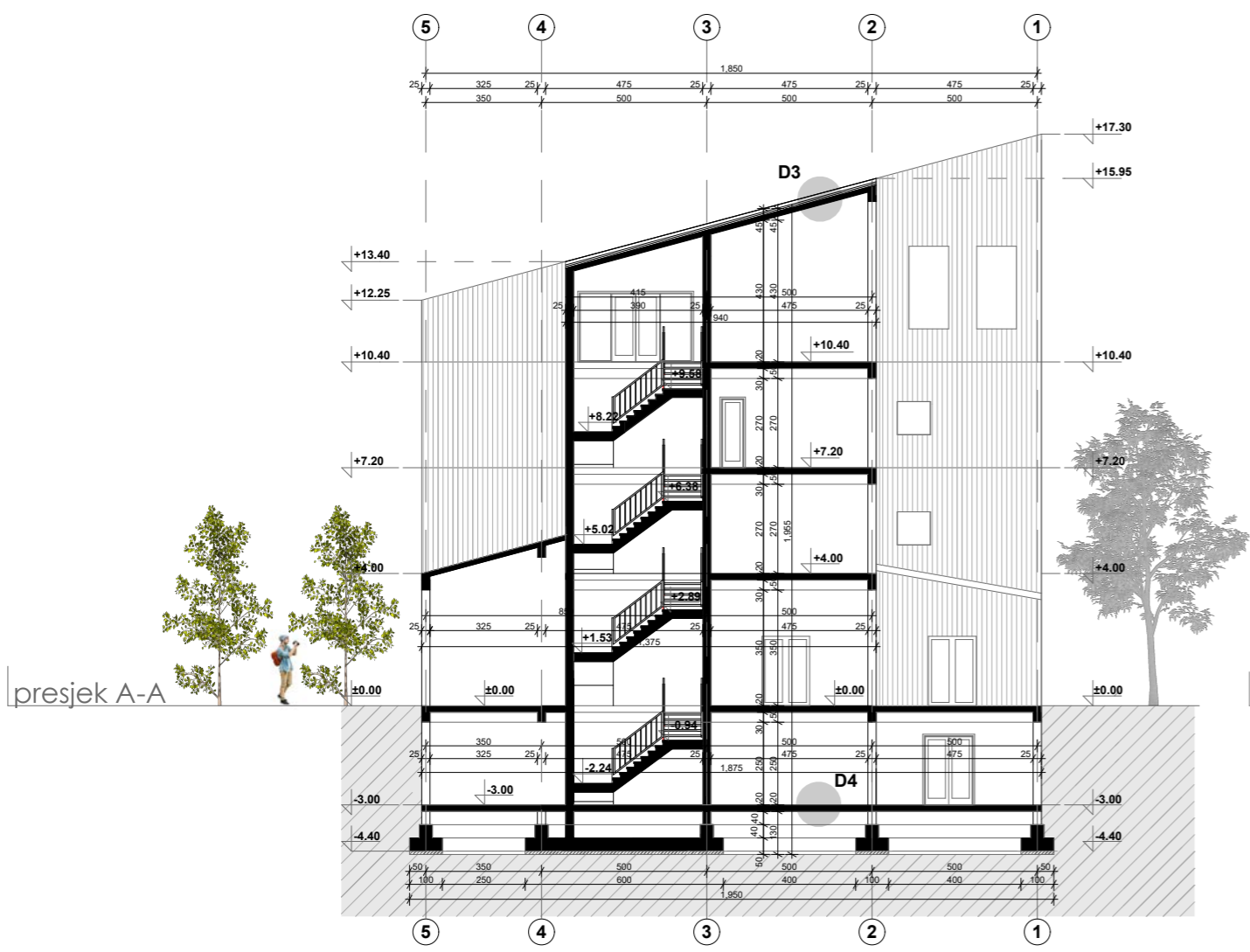
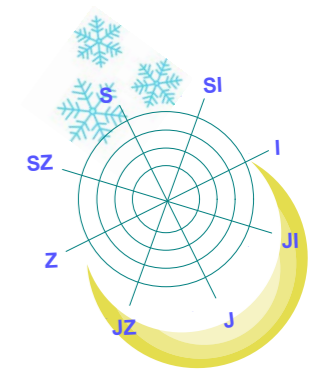


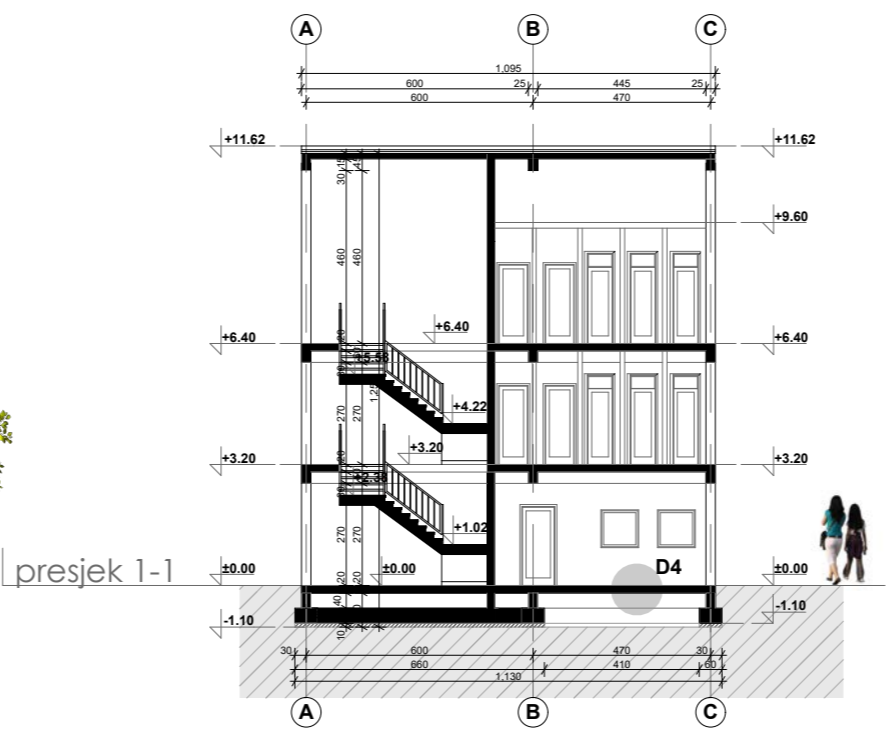
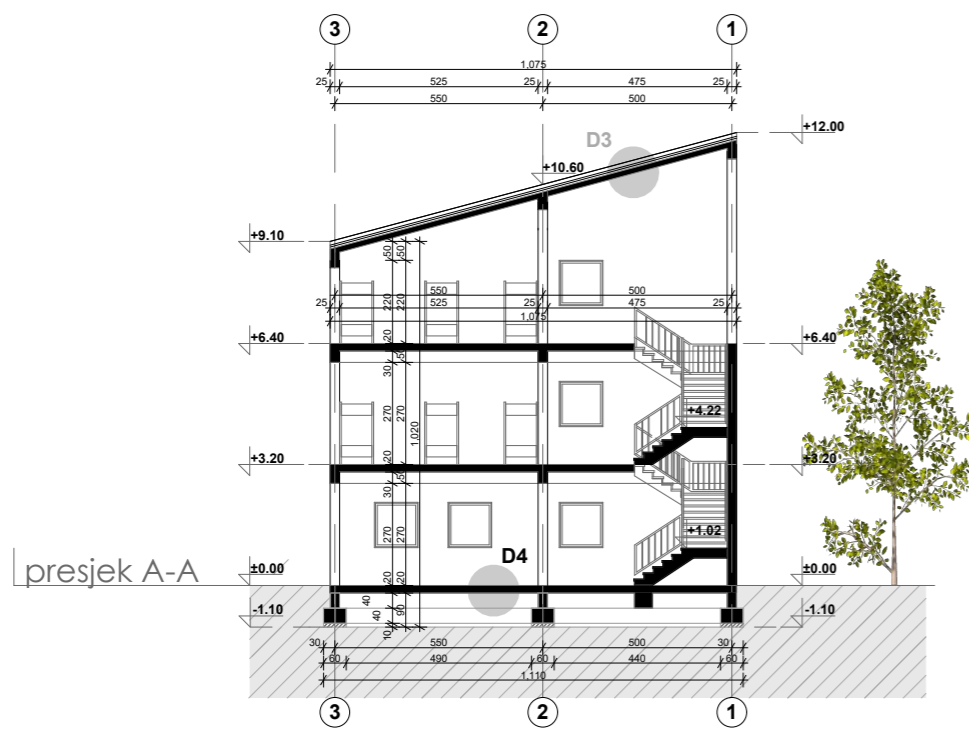
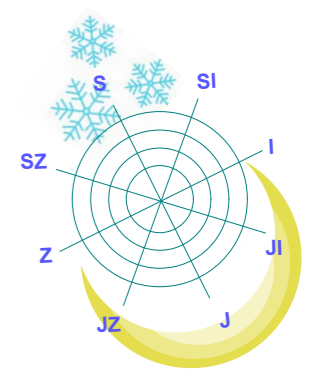


Legenda površina		
Objekat 1- Duhovni centar		
1	Komunikacije	10,36m ²
2	Hol/hodnik	14,60m ²
3	Biblioteka	145,30m ²
4	Ostava	18,60m ²
ukupna površina trecega sprata		188,86m ²

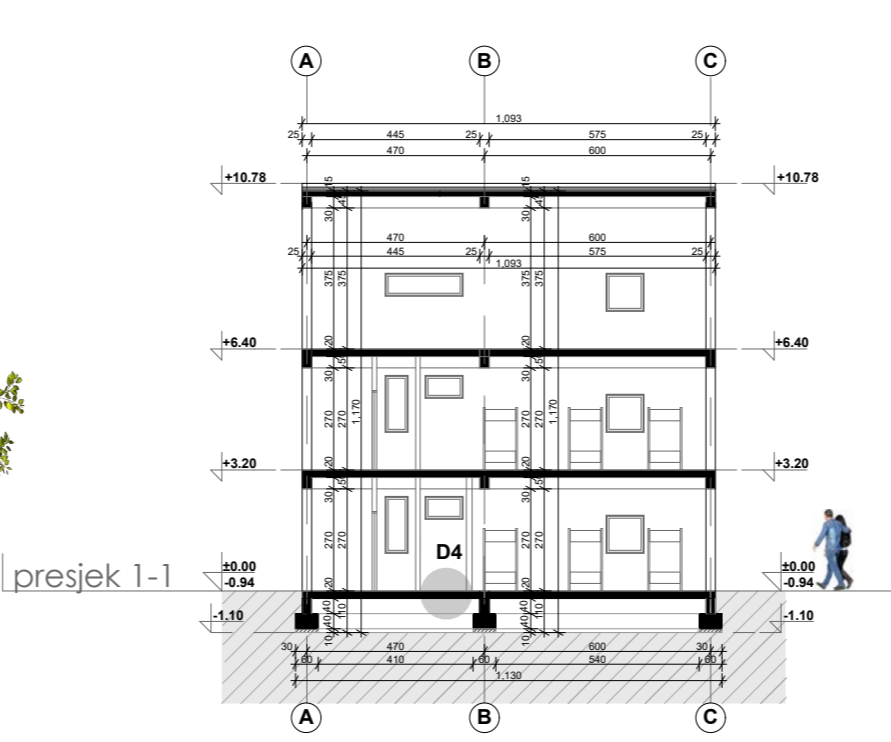
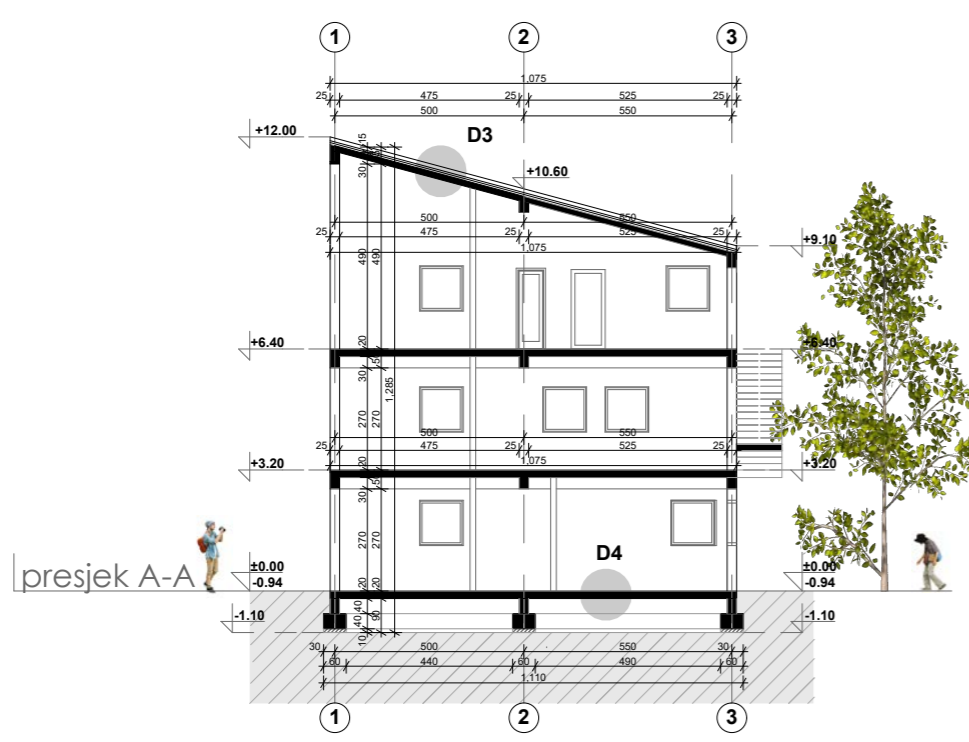


Presjeci A-A i 1-1
R 1:200

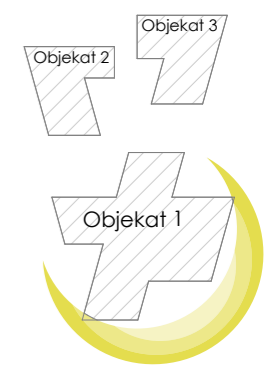


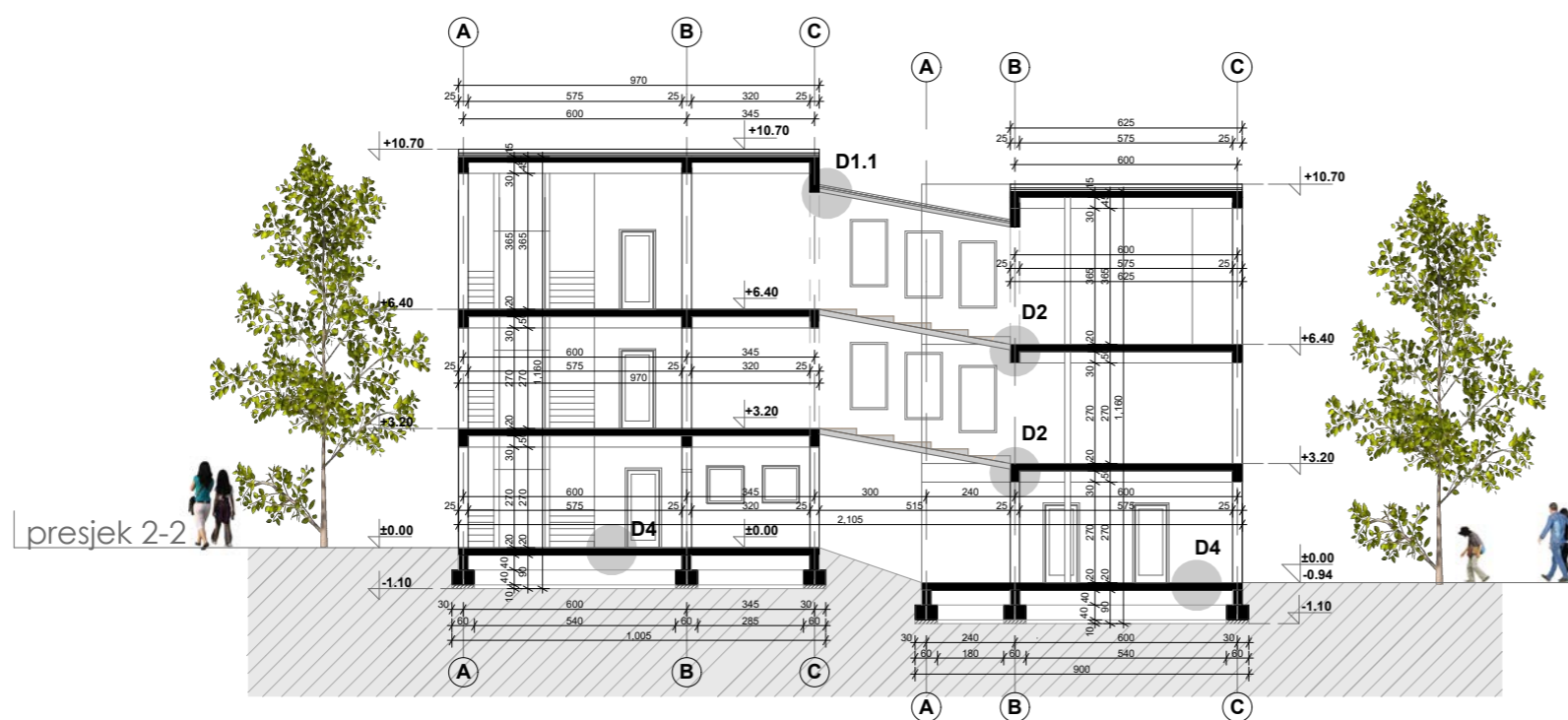
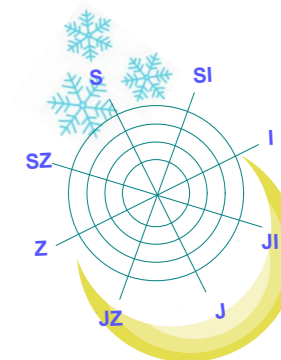


Objekat 2
Konak I

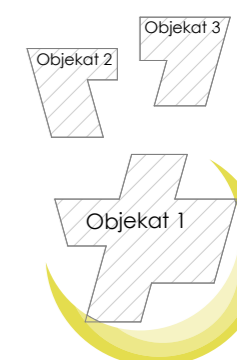


Objekat 3
Konak II





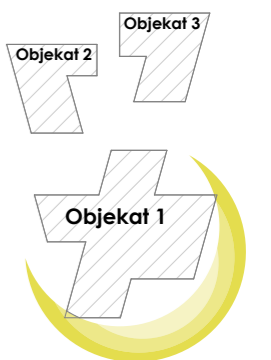
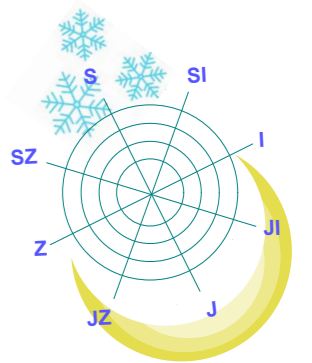
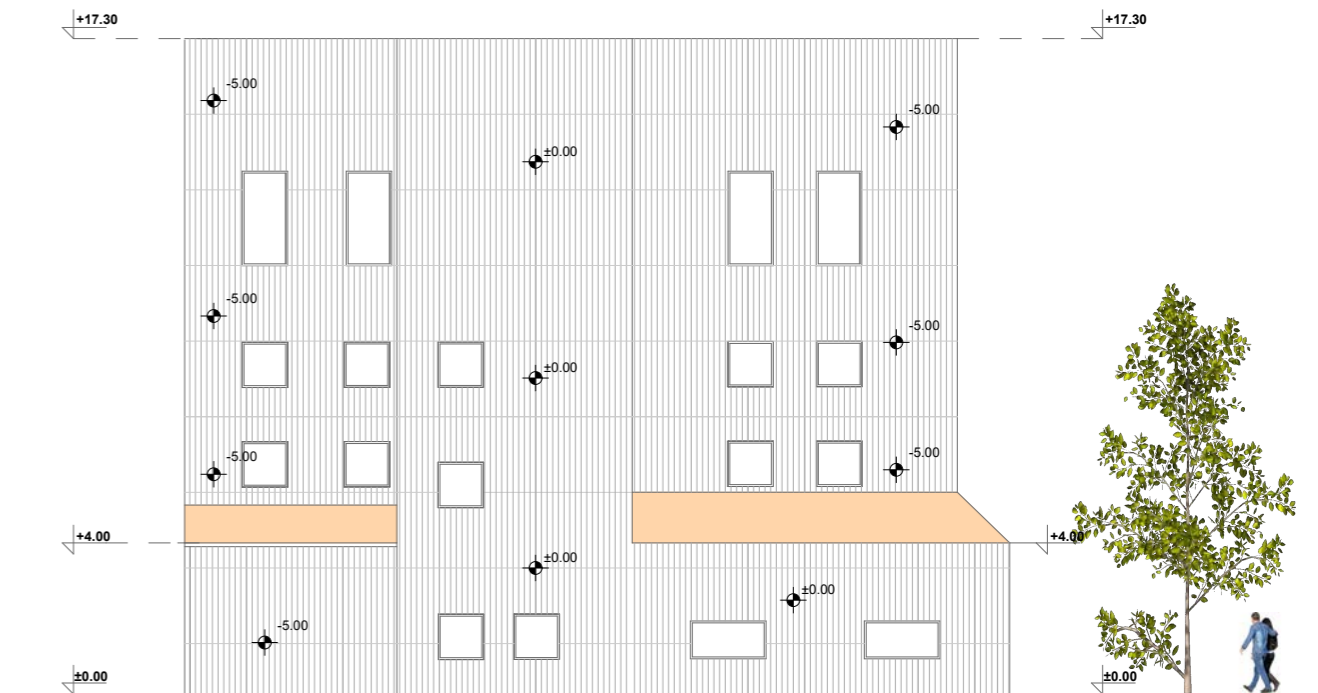
Objekat 2 i 3
Konak I i II



Juzna fasada
R 1:200
Objekat 1



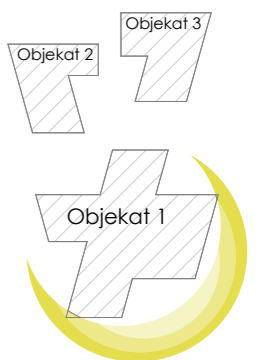
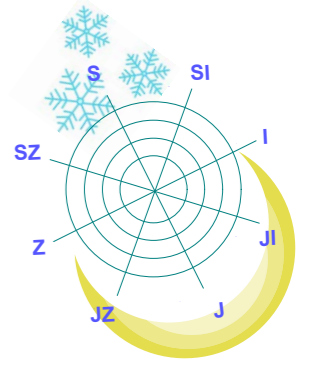
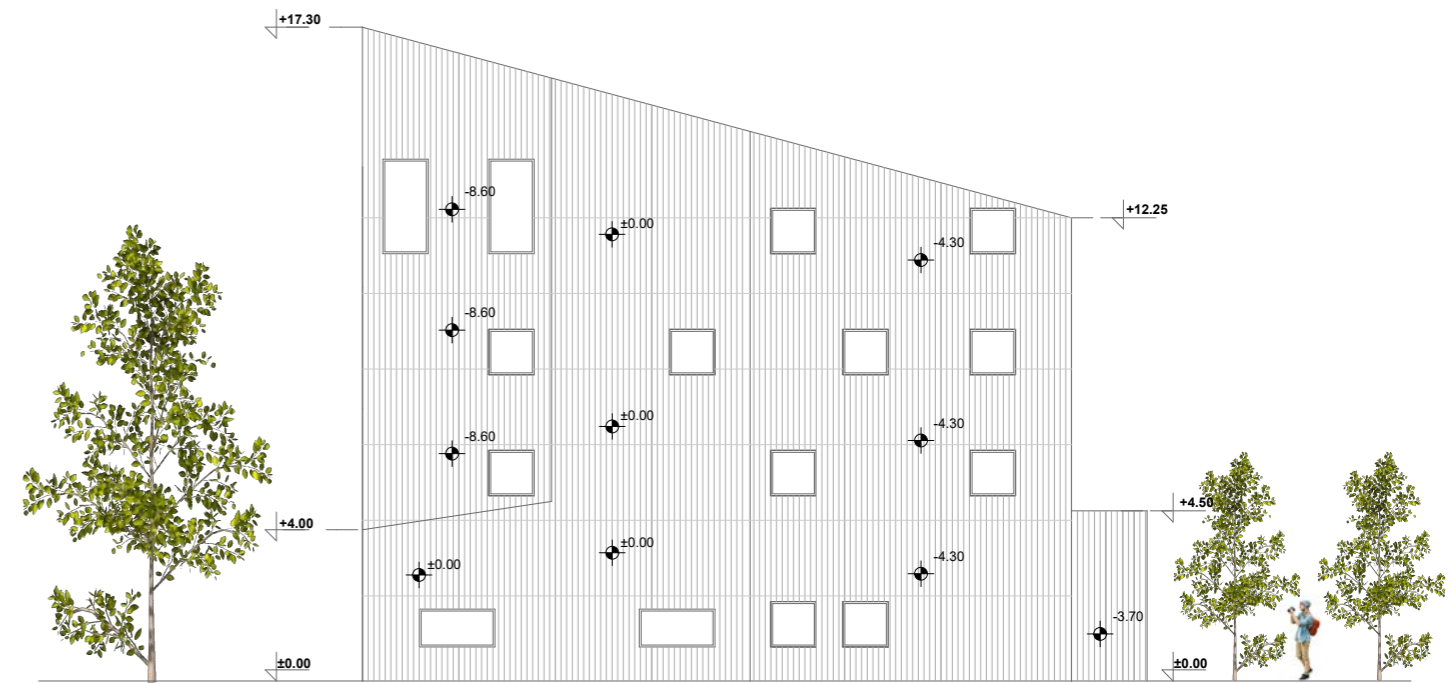
Sjeverna fasada
R 1:200
Objekat 1



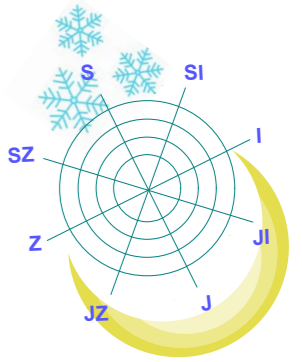
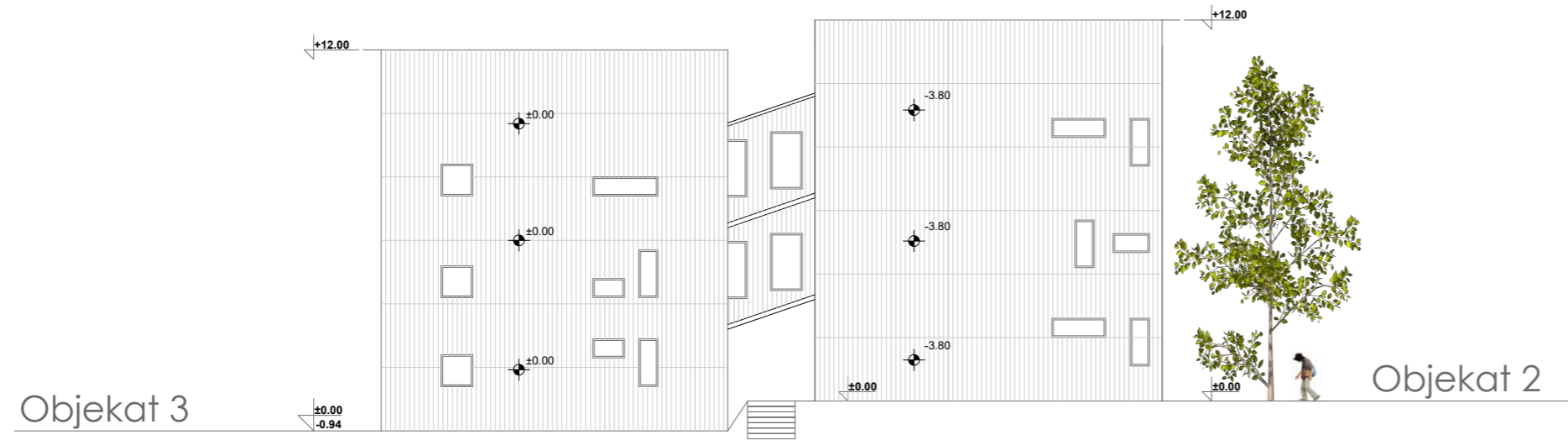
Istocna fasada
R 1:200
Objekat 1



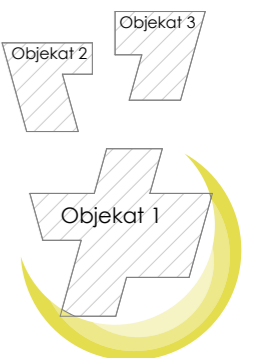
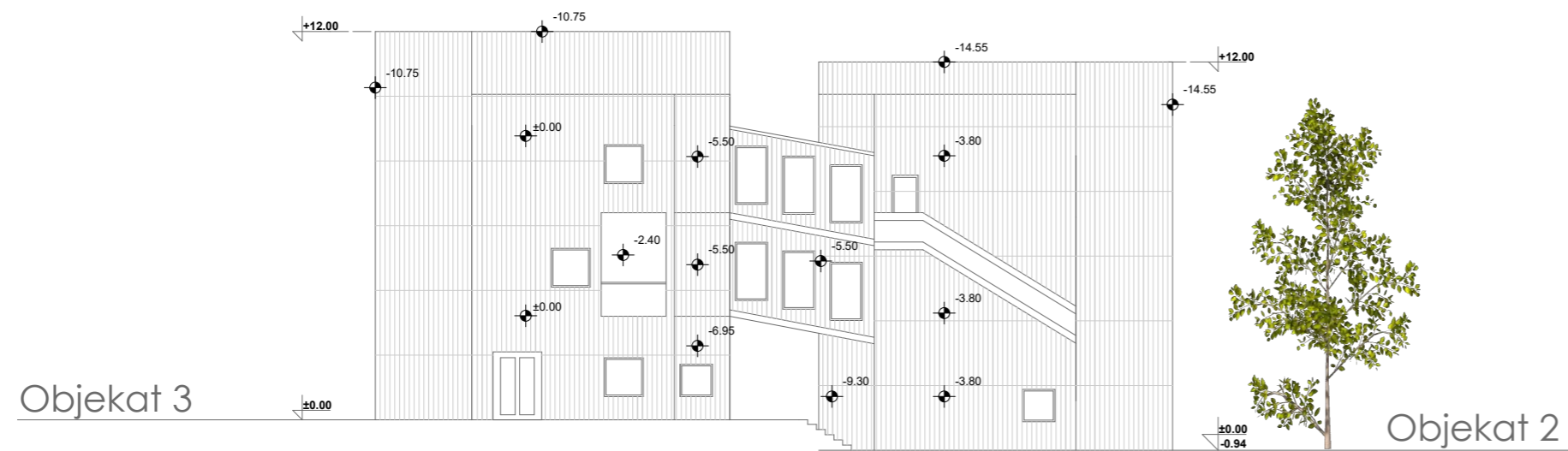
Zapadna Fasada
R 1:200
Objekat 1



Sjeverna fasada
R 1:200

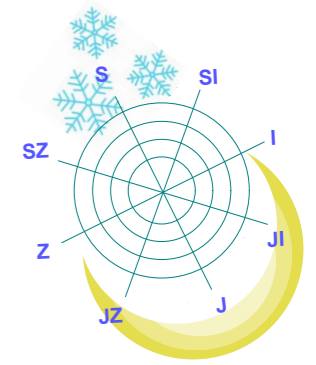


Juzna fasada
R 1:200

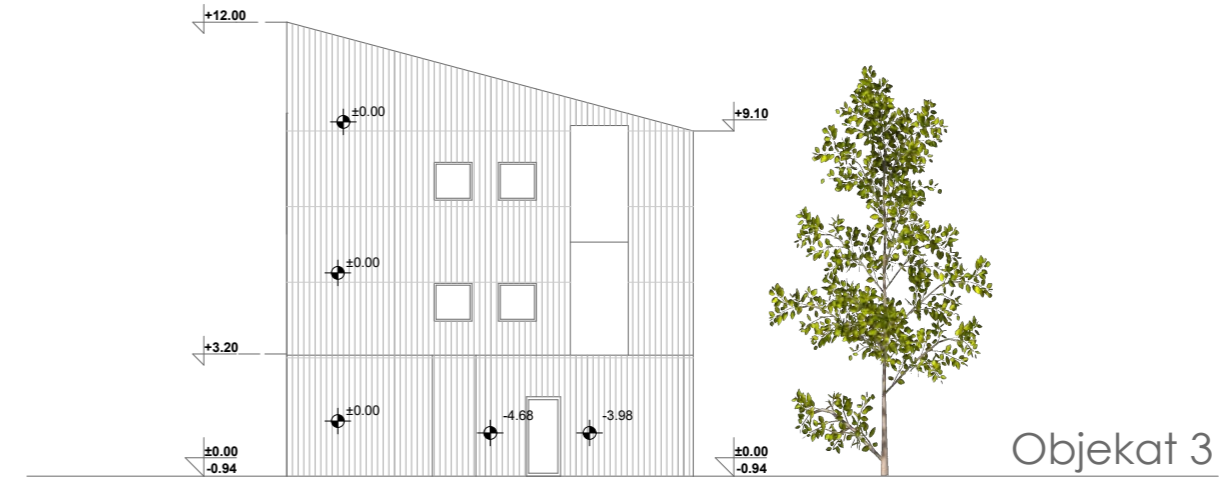
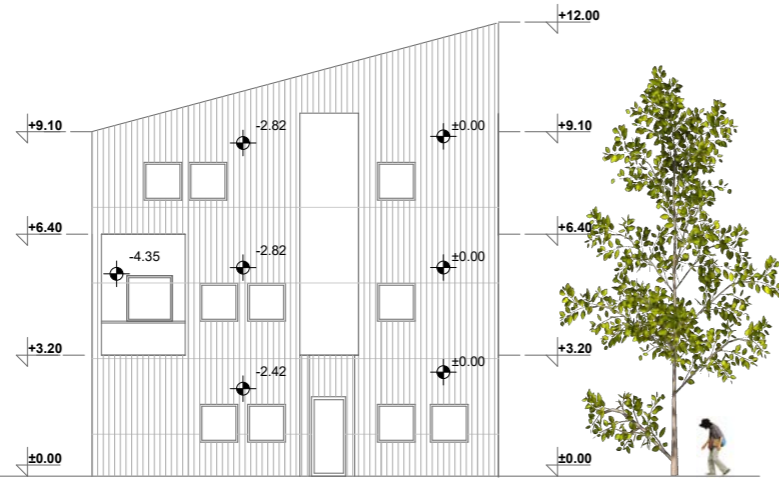


Zapadna i Istocna fasada
R 1:200
Objekat 2

Istocna i Zapadna
R 1:200
Objekat 3

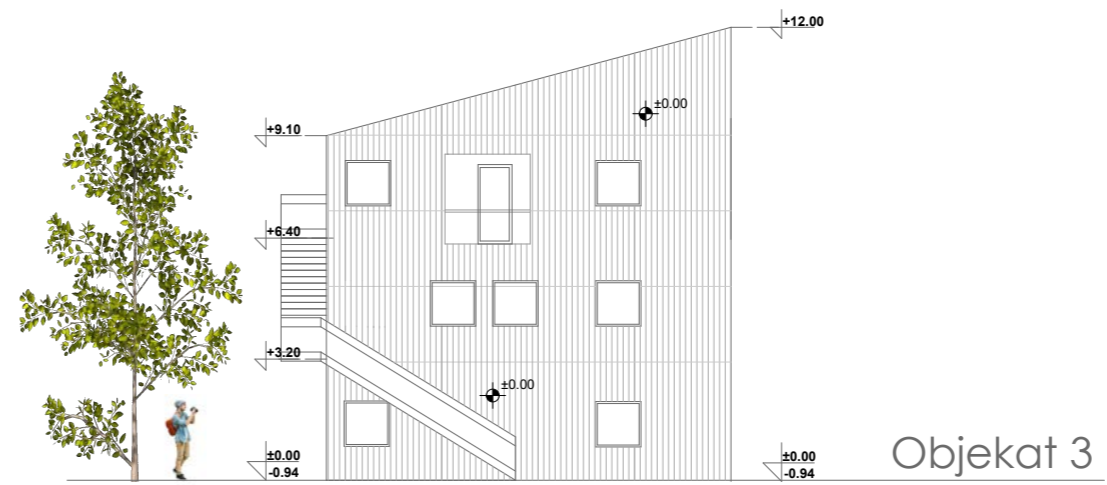
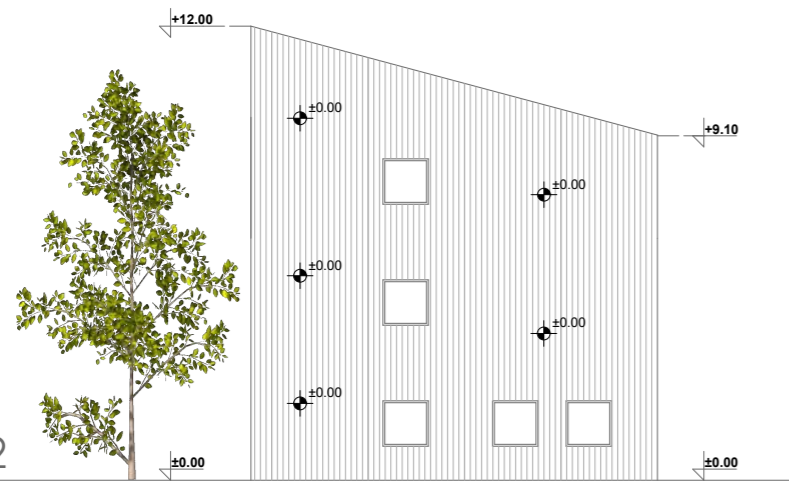


Objekat 2



Objekat 3

Objekat 2



Objekat 3

